

# CERTIFICATE OF ANALYSIS

## ISO/IEC 17025:2017 ACCREDITATION #103104



Order #: 71786  
 Order Name: Canna Flora  
 Hemp Flower Strain: Super  
 Sour Space Candy  
 Batch#: CFH-0221-IFSSSC-0032  
 Received: 02/10/2021  
 Completed: 02/17/2021



Canna Flora Hemp  
 220 Venus street. Unit #13  
 Jupiter FL, 33458  
 (833) 765-4367  
 info@cannafloerahemp.com



### Sample



**0.311%**  
D9-THC

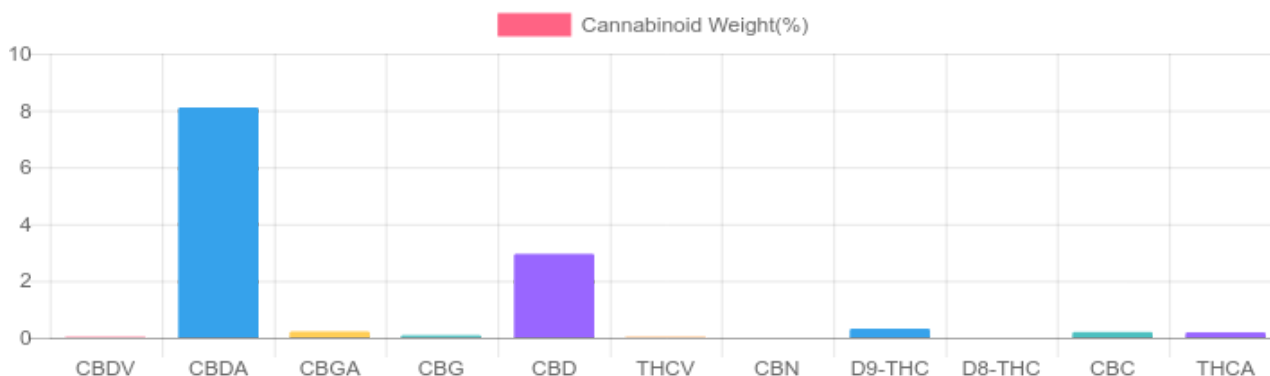
**10.050%**  
Total CBD

### Cannabinoids Test

SHIMADZU INTEGRATED UPLC-PDA  
 GSL SOP 400

UPLOADED: 02/12/2021 12:33:23

Cannabinoids	LOQ	weight(%)	mg/g
D9-THC	10 PPM	0.311%	3.114
THCA	10 PPM	0.182%	1.816
CBD	10 PPM	2.949%	29.494
CBDA	20 PPM	8.097%	80.965
CBDV	20 PPM	0.019%	0.195
CBC	10 PPM	0.199%	1.993
CBN	10 PPM	N/D	N/D
CBG	10 PPM	0.086%	0.864
CBGA	20 PPM	0.222%	2.219
D8-THC	10 PPM	N/D	N/D
THCV	10 PPM	0.016%	0.158
TOTAL D9-THC		0.311%	0.311%
TOTAL CBD*		10.050%	100.500
TOTAL CANNABINOIDS		12.081%	120.818



Reporting Limit 10 ppm

\*Total CBD = CBD + CBDA x 0.877

N/D - Not Detected, B/LOQ - Below Limit of Quantification

Dr. Andrew Hall, Ph.D., Chief Scientific Officer

Ben Witten, MS, MT., Lab Director

**Green Scientific Labs**  
 info@greenscientificlabs.com  
 1-833 TEST CBD



Green Scientific Labs uses its best efforts to deliver high quality results and to verify that the data contained therein are based on sound scientific judgment and levels listed are guidelines only and all data was reported based on standard laboratory procedures and deviations. However Green Scientific Labs makes no warranties or claims to that effect and further shall not be liable for any damage or misrepresentation that may result from the use or misuse of the data contained herein in any way. Further, Green Scientific Labs makes no claims regarding representations of the analyzed sample to the larger batch from which it was taken. Data and information in this report are intended solely for the individual(s) for whom samples were submitted and as part of our strict confidentiality policy, Green Scientific Labs can only discuss results with the original client of record.

# CERTIFICATE OF ANALYSIS

## ISO/IEC 17025:2017 ACCREDITATION #103104



Order #: 71786  
 Order Name: Canna Flora  
 Hemp Flower Strain: Super  
 Sour Space Candy  
 Batch#: CFH-0221-IFSSSC-0032  
 Received: 02/10/2021  
 Completed: 02/17/2021



Canna Flora Hemp  
 220 Venus street. Unit #13  
 Jupiter FL, 33458  
 (833) 765-4367  
 info@cannafloerahemp.com



### TERPENES: TOTAL (1.330%)

Headspace GCMS - Shimadzu GCMS QP2020 with HS20

GSL SOP 404

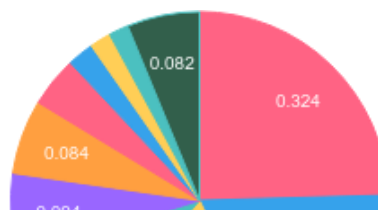
Prepared: 02/15/2021 20:56:56

Uploaded: 02/16/2021 20:01:47

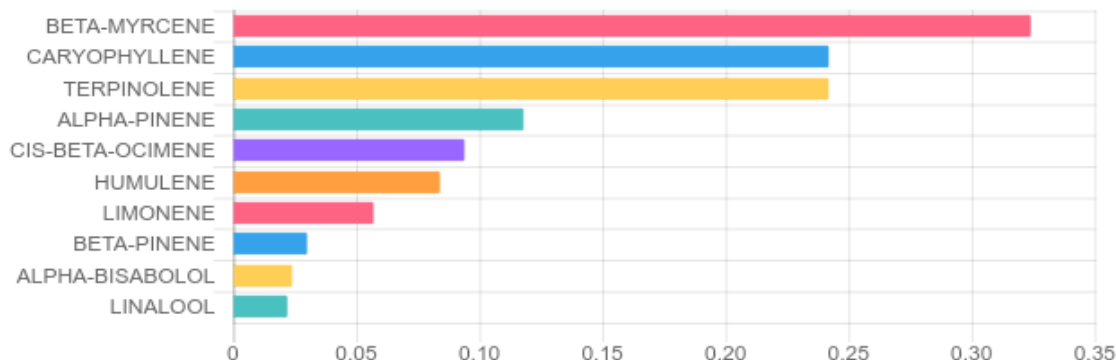
Terpene	Results (%)	LOQ (%)	LOD (%)
3-CARENE	0.009%	0.0067%	0.0063%
ALPHA-BISABOLOL	0.024%	0.0067%	0.0063%
ALPHA-PINENE	0.118%	0.0067%	0.0063%
ALPHA-TERPINENE	0.013%	0.0067%	0.0063%
BETA-MYRCENE	0.324%	0.0067%	0.0063%
BETA-PINENE	0.030%	0.0067%	0.0063%
CAMPHENE	B/LOQ	0.0067%	0.0063%
CARYOPHYLLENE	0.242%	0.0067%	0.0063%
CARYOPHYLLENE OXIDE	0.012%	0.0067%	0.0063%
CIS-BETA-OCIMENE	0.094%	0.0067%	0.0031%
EUCALYPTOL	B/LOQ	0.0067%	0.0063%
GAMMA-TERPINENE	0.010%	0.0067%	0.0016%
GUAJOL	0.018%	0.0067%	0.0063%
HUMULENE	0.084%	0.0067%	0.0063%

Terpene	Results (%)	LOQ (%)	LOD (%)
LIMONENE	0.057%	0.0067%	0.0063%
LINALOOL	0.022%	0.0067%	0.0063%
P-CYMENE	B/LOQ	0.0067%	0.0063%
TERPINOLENE	0.242%	0.0067%	0.0063%
TRANS-BETA-OCIMENE	B/LOQ	0.0067%	0.0031%
TRANS-NEROLIDOL	0.020%	0.0067%	0.0063%

### Terpenes Breakdown



### Top Terpenes Results:



### Tested for but not present:

ISOPULEGOL, GERANIOL, CIS-NEROLIDOL

Dr. Andrew Hall, Ph.D., Chief Scientific Officer

Ben Witten, MS, MT., Lab Director

Green Scientific Labs  
 info@greenscientificlabs.com  
 1-833-TEST-CBD



Green Scientific Labs uses its best efforts to deliver high quality results and to verify that the data contained therein are based on sound scientific judgment and levels listed are guidelines only and all data was reported based on standard laboratory procedures and deviations. However Green Scientific Labs makes no warranties or claims to that effect and further shall not be liable for any damage or misrepresentation that may result from the use or misuse of the data contained herein in any way. Further, Green Scientific Labs makes no claims regarding representations of the analyzed sample to the larger batch from which it was taken. Data and information in this report are intended solely for the individual(s) for whom samples were submitted and as part of our strict confidentiality policy, Green Scientific Labs can only discuss results with the original client of record.

# CERTIFICATE OF ANALYSIS

## ISO/IEC 17025:2017 ACCREDITATION #103104



Order #: 71786  
Order Name: Canna Flora  
Hemp Flower Strain: Super  
Sour Space Candy  
Batch#: CFH-0221-IFSSSC-0032  
Received: 02/10/2021  
Completed: 02/17/2021



Canna Flora Hemp  
220 Venus street. Unit #13  
Jupiter FL, 33458  
(833) 765-4367  
info@cannaflorahemp.com



### Moisture Analysis:

Shimadzu MOC63U Moisture Balance - GSL SOP 411

Uploaded: 02/11/2021 16:40:28

#### Moisture %

11.4%

Dr. Andrew Hall, Ph.D., Chief Scientific Officer

Ben Witten, MS, MT., Lab Director

Green Scientific Labs  
info@greenscientificlabs.com  
1-833 TEST CBD



Green Scientific Labs uses its best efforts to deliver high quality results and to verify that the data contained therein are based on sound scientific judgment and levels listed are guidelines only and all data was reported based on standard laboratory procedures and deviations. However Green Scientific Labs makes no warranties or claims to that effect and further shall not be liable for any damage or misrepresentation that may result from the use or misuse of the data contained herein in any way. Further, Green Scientific Labs makes no claims regarding representations of the analyzed sample to the larger batch from which it was taken. Data and information in this report are intended solely for the individual(s) for whom samples were submitted and as part of our strict confidentiality policy, Green Scientific Labs can only discuss results with the original client of record.