

CERTIFICATE OF ANALYSIS

ISO/IEC 17025:2017 ACCREDITATION #103104



Order #: 67290
Order Name: Canna Flora
 Hemp Flower Strain: Orange
 Glaze
Batch#: CHF-1220-IFOG-0025
Received: 12/02/2020
Completed: 12/03/2020



Canna Flora Hemp
 220 Venus street. Unit #13
 Jupiter FL, 33458
 (866) 765-4367
 info@cannaflorahemp.com



Sample



0.056%
D9-THC

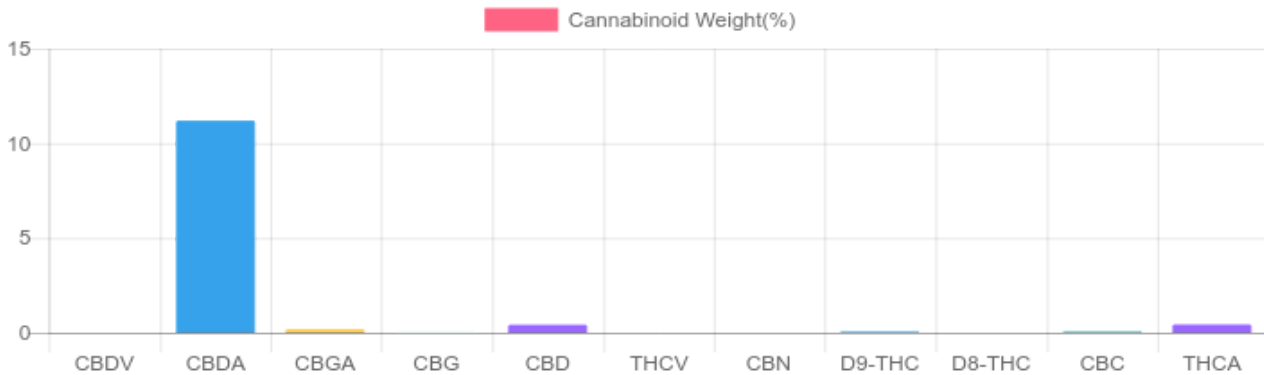
10.226%
Total CBD

Cannabinoids Test

SHIMADZU INTEGRATED UPLC-PDA
 GSL SOP 400

UPLOADED: 12/03/2020 20:17:38

Cannabinoids	LOQ	weight(%)	mg/g
D9-THC	10 PPM	0.056%	0.562
THCA	10 PPM	0.430%	4.301
CBD	10 PPM	0.417%	4.172
CBDA	20 PPM	11.185%	111.846
CBDV	20 PPM	N/D	N/D
CBC	10 PPM	0.065%	0.647
CBN	10 PPM	N/D	N/D
CBG	10 PPM	0.013%	0.128
CBGA	20 PPM	0.183%	1.830
D8-THC	10 PPM	N/D	N/D
THCV	10 PPM	N/D	N/D
TOTAL D9-THC		0.056%	0.056%
TOTAL CBD*		10.226%	102.261
TOTAL CANNABINOIDS		12.349%	123.486



Reporting Limit 10 ppm
 *Total CBD = CBD + CBDA x 0.877
 N/D - Not Detected, B/LOQ - Below Limit of Quantification

Dr. Andrew Hall, Ph.D., Chief Scientific Officer

Ben Witten, MS, MT., Lab Director

Green Scientific Labs
 info@greenscientificlabs.com
 1-833 TEST CBD



Green Scientific Labs uses its best efforts to deliver high quality results and to verify that the data contained therein are based on sound scientific judgment and levels listed are guidelines only and all data was reported based on standard laboratory procedures and deviations. However Green Scientific Labs makes no warranties or claims to that effect and further shall not be liable for any damage or misrepresentation that may result from the use or misuse of the data contained herein in any way. Further, Green Scientific Labs makes no claims regarding representations of the analyzed sample to the larger batch from which it was taken. Data and information in this report are intended solely for the individual(s) for whom samples were submitted and as part of our strict confidentiality policy, Green Scientific Labs can only discuss results with the original client of record.

CERTIFICATE OF ANALYSIS

ISO/IEC 17025:2017 ACCREDITATION #103104



Order #: 67290
 Order Name: Canna Flora
 Hemp Flower Strain: Orange
 Glaze
 Batch#: CHF-1220-IFOG-0025
 Received: 12/02/2020
 Completed: 12/03/2020



Canna Flora Hemp
 220 Venus street. Unit #13
 Jupiter FL, 33458
 (866) 765-4367
 info@cannaflorahemp.com



TERPENES: TOTAL (1.280%)

Headspace GCMS - Shimadzu GCMS QP2020 with HS20

GSL SOP 404

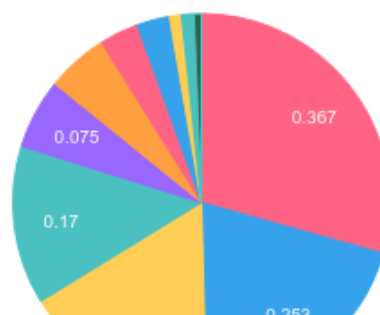
Prepared: 12/02/2020 21:13:32

Uploaded: 12/03/2020 13:05:22

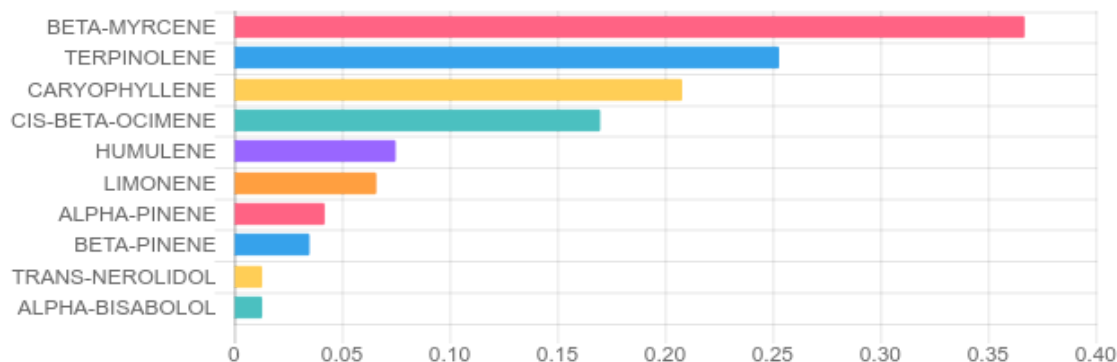
Terpene	Results (%)	LOQ (%)	LOD (%)
3-CARENE	B/LOQ	0.0067%	0.0063%
ALPHA-BISABOLOL	0.013%	0.0067%	0.0063%
ALPHA-PINENE	0.042%	0.0067%	0.0063%
ALPHA-TERPINENE	0.008%	0.0067%	0.0063%
BETA-MYRCENE	0.367%	0.0067%	0.0063%
BETA-PINENE	0.035%	0.0067%	0.0063%
CARYOPHYLLENE	0.208%	0.0067%	0.0063%
CARYOPHYLLENE OXIDE	B/LOQ	0.0067%	0.0063%
CIS-BETA-OCIMENE	0.170%	0.0067%	0.0031%
GAMMA-TERPINENE	B/LOQ	0.0067%	0.0016%
HUMULENE	0.075%	0.0067%	0.0063%
LIMONENE	0.066%	0.0067%	0.0063%
LINALOOL	B/LOQ	0.0067%	0.0063%
TERPINOLENE	0.253%	0.0067%	0.0063%

Terpene	Results (%)	LOQ (%)	LOD (%)
TRANS-BETA-OCIMENE	B/LOQ	0.0067%	0.0031%
TRANS-NEROLIDOL	0.013%	0.0067%	0.0063%

Terpenes Breakdown



Top Terpenes Results:



Tested for but not present:

CAMPHENE, P-CYMENE, EUCALYPTOL, ISOPULEGOL, GERANIOL, CIS-NEROLIDOL, GUAIOL

Dr. Andrew Hall, Ph.D., Chief Scientific Officer

Ben Witten, MS, MT., Lab Director

Green Scientific Labs
 info@greenscientificlabs.com
 1-833-TEST-CBD



Green Scientific Labs uses its best efforts to deliver high quality results and to verify that the data contained therein are based on sound scientific judgment and levels listed are guidelines only and all data was reported based on standard laboratory procedures and deviations. However Green Scientific Labs makes no warranties or claims to that effect and further shall not be liable for any damage or misrepresentation that may result from the use or misuse of the data contained herein in any way. Further, Green Scientific Labs makes no claims regarding representations of the analyzed sample to the larger batch from which it was taken. Data and information in this report are intended solely for the individual(s) for whom samples were submitted and as part of our strict confidentiality policy, Green Scientific Labs can only discuss results with the original client of record.