

# CERTIFICATE OF ANALYSIS

## ISO/IEC 17025:2017 ACCREDITATION #103104



Order #: 67288  
 Order Name: Canna Flora  
 Hemp Flower Strain: Fruit  
 Loops  
 Batch#: CFH-1220-IFFL-0022  
 Received: 12/02/2020  
 Completed: 12/03/2020



Canna Flora Hemp  
 220 Venus street. Unit #13  
 Jupiter FL, 33458  
 (866) 765-4367  
 info@cannaflorahemp.com



### Sample



**0.054%**  
D9-THC

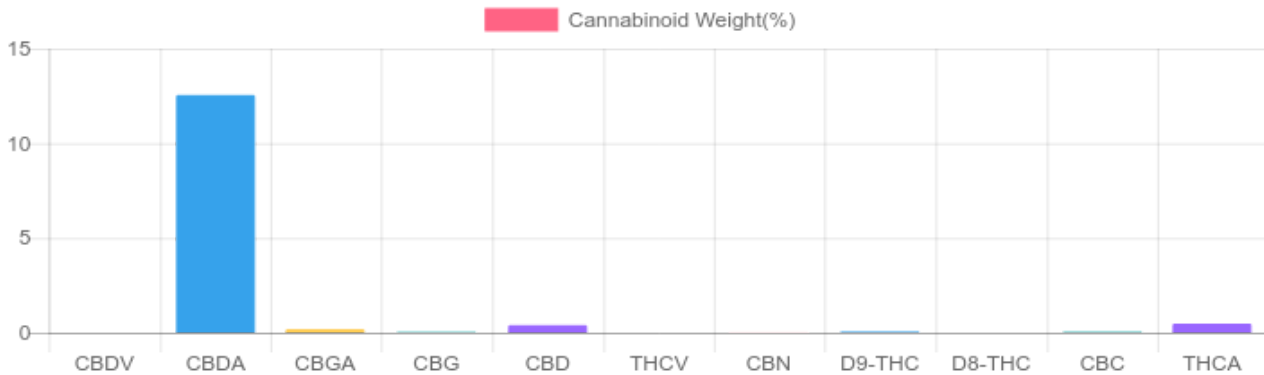
**11.404%**  
Total CBD

### Cannabinoids Test

SHIMADZU INTEGRATED UPLC-PDA  
 GSL SOP 400

UPLOADED: 12/03/2020 16:58:22

| Cannabinoids       | LOQ    | weight(%) | mg/g    |
|--------------------|--------|-----------|---------|
| D9-THC             | 10 PPM | 0.054%    | 0.544   |
| THCA               | 10 PPM | 0.474%    | 4.744   |
| CBD                | 10 PPM | 0.399%    | 3.986   |
| CBDA               | 20 PPM | 12.548%   | 125.485 |
| CBDV               | 20 PPM | N/D       | N/D     |
| CBC                | 10 PPM | 0.048%    | 0.476   |
| CBN                | 10 PPM | 0.008%    | 0.079   |
| CBG                | 10 PPM | 0.036%    | 0.355   |
| CBGA               | 20 PPM | 0.185%    | 1.851   |
| D8-THC             | 10 PPM | N/D       | N/D     |
| THCV               | 10 PPM | N/D       | N/D     |
| TOTAL D9-THC       |        | 0.054%    | 0.054%  |
| TOTAL CBD*         |        | 11.404%   | 114.036 |
| TOTAL CANNABINOIDS |        | 13.752%   | 137.520 |



Reporting Limit 10 ppm  
 \*Total CBD = CBD + CBDA x 0.877  
 N/D - Not Detected, B/LOQ - Below Limit of Quantification

Dr. Andrew Hall, Ph.D., Chief Scientific Officer

Ben Witten, MS, MT., Lab Director

**Green Scientific Labs**  
 info@greenscientificlabs.com  
 1-833 TEST CBD



Green Scientific Labs uses its best efforts to deliver high quality results and to verify that the data contained therein are based on sound scientific judgment and levels listed are guidelines only and all data was reported based on standard laboratory procedures and deviations. However Green Scientific Labs makes no warranties or claims to that effect and further shall not be liable for any damage or misrepresentation that may result from the use or misuse of the data contained herein in any way. Further, Green Scientific Labs makes no claims regarding representations of the analyzed sample to the larger batch from which it was taken. Data and information in this report are intended solely for the individual(s) for whom samples were submitted and as part of our strict confidentiality policy, Green Scientific Labs can only discuss results with the original client of record.

# CERTIFICATE OF ANALYSIS

## ISO/IEC 17025:2017 ACCREDITATION #103104



Order #: 67288  
 Order Name: Canna Flora  
 Hemp Flower Strain: Fruit  
 Loops  
 Batch#: CFH-1220-IFFL-0022  
 Received: 12/02/2020  
 Completed: 12/03/2020



Canna Flora Hemp  
 220 Venus street. Unit #13  
 Jupiter FL, 33458  
 (866) 765-4367  
 info@cannaflorahemp.com



### TERPENES: TOTAL (1.582%)

Headspace GCMS - Shimadzu GCMS QP2020 with HS20

GSL SOP 404

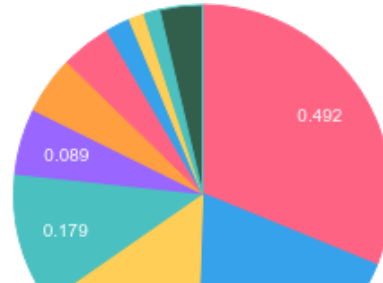
Prepared: 12/02/2020 18:17:38

Uploaded: 12/03/2020 13:51:52

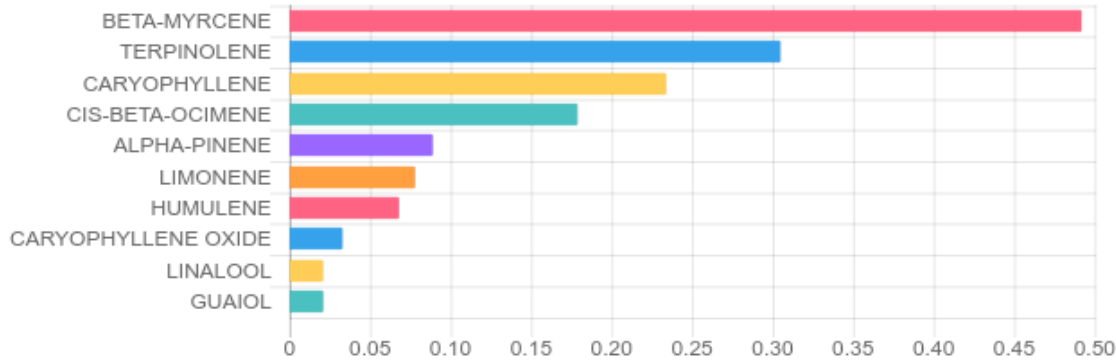
| Terpene             | Results (%) | LOQ (%) | LOD (%) |
|---------------------|-------------|---------|---------|
| 3-CARENE            | 0.010%      | 0.0067% | 0.0063% |
| ALPHA-PINENE        | 0.089%      | 0.0067% | 0.0063% |
| ALPHA-TERPINENE     | 0.012%      | 0.0067% | 0.0063% |
| BETA-MYRCENE        | 0.492%      | 0.0067% | 0.0063% |
| CAMPHENE            | B/LOQ       | 0.0067% | 0.0063% |
| CARYOPHYLLENE       | 0.234%      | 0.0067% | 0.0063% |
| CARYOPHYLLENE OXIDE | 0.033%      | 0.0067% | 0.0063% |
| CIS-BETA-OCIMENE    | 0.179%      | 0.0067% | 0.0031% |
| GAMMA-TERPINENE     | 0.010%      | 0.0067% | 0.0016% |
| GUAIOL              | 0.021%      | 0.0067% | 0.0063% |
| HUMULENE            | 0.068%      | 0.0067% | 0.0063% |
| LIMONENE            | 0.078%      | 0.0067% | 0.0063% |
| LINALOOL            | 0.021%      | 0.0067% | 0.0063% |
| P-CYMENE            | B/LOQ       | 0.0067% | 0.0063% |

| Terpene            | Results (%) | LOQ (%) | LOD (%) |
|--------------------|-------------|---------|---------|
| TERPINOLENE        | 0.305%      | 0.0067% | 0.0063% |
| TRANS-BETA-OCIMENE | 0.010%      | 0.0067% | 0.0031% |
| TRANS-NEROLIDOL    | 0.016%      | 0.0067% | 0.0063% |

### Terpenes Breakdown



### Top Terpenes Results:



### Tested for but not present:

BETA-PINENE, EUCALYPTOL, ISOPULEGOL, GERANIOL, CIS-NEROLIDOL, ALPHA-BISABOLOL

Dr. Andrew Hall, Ph.D., Chief Scientific Officer

Ben Witten, MS, MT., Lab Director

**Green Scientific Labs**  
 info@greenscientificlabs.com  
 1-833 TEST CBD



Green Scientific Labs uses its best efforts to deliver high quality results and to verify that the data contained therein are based on sound scientific judgment and levels listed are guidelines only and all data was reported based on standard laboratory procedures and deviations. However Green Scientific Labs makes no warranties or claims to that effect and further shall not be liable for any damage or misrepresentation that may result from the use or misuse of the data contained herein in any way. Further, Green Scientific Labs makes no claims regarding representations of the analyzed sample to the larger batch from which it was taken. Data and information in this report are intended solely for the individual(s) for whom samples were submitted and as part of our strict confidentiality policy, Green Scientific Labs can only discuss results with the original client of record.