

CERTIFICATE OF ANALYSIS

ISO/IEC 17025:2017 ACCREDITATION #103104



Order #: 58402
 Order Name: Canna Flora
 Hemp Strain: Super Sour
 Candy
 Batch#: CFH-720-IFSSC-0007
 Received: 07/22/2020
 Completed: 07/28/2020



Canna Flora Hemp
 220 Venus street. Unit #13
 Jupiter FL, 33458
 (561) 827-5500
 info@cannafloerahemp.com



Sample



0.331%
D9-THC

12.473%
Total CBD

Cannabinoids Test

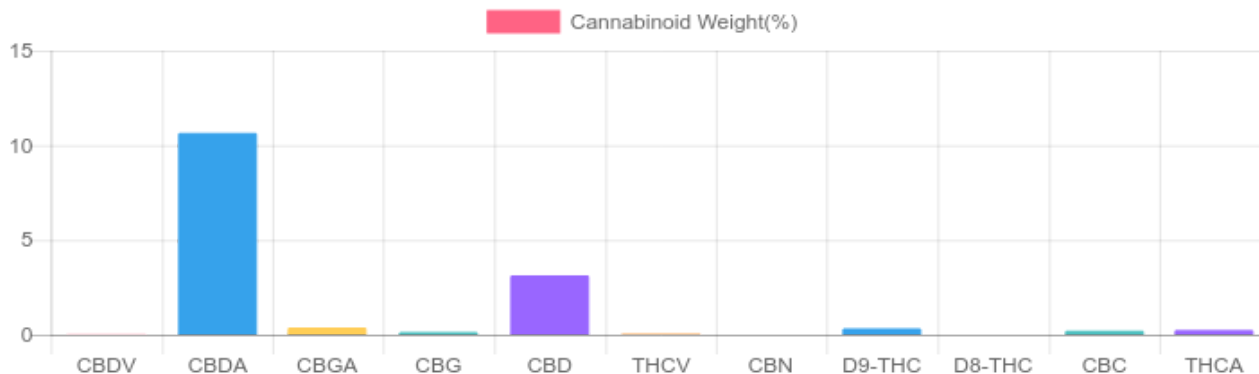
SHIMADZU INTEGRATED UPLC-PDA

GSL SOP 400

PREPARED: 07/25/2020 15:43:20

UPLOADED: 07/28/2020 11:24:12

Cannabinoids	LOQ	weight(%)	mg/g
D9-THC	10 PPM	0.331%	3.308
THCA	10 PPM	0.248%	2.475
CBD	10 PPM	3.129%	31.287
CBDA	20 PPM	10.654%	106.538
CBDV	20 PPM	0.023%	0.233
CBC	10 PPM	0.212%	2.124
CBN	10 PPM	N/D	N/D
CBG	10 PPM	0.141%	1.410
CBGA	20 PPM	0.373%	3.730
D8-THC	10 PPM	N/D	N/D
THCV	10 PPM	0.040%	0.403
TOTAL D9-THC		0.331%	0.331%
TOTAL CBD*		12.473%	124.721
TOTAL CANNABINOIDS		15.151%	151.508



Reporting Limit 10 ppm

*Total CBD = CBD + CBDA x 0.877

N/D - Not Detected, B/LOQ - Below Limit of Quantification

Dr. Andrew Hall, Ph.D., Chief Scientific Officer

Ben Witten, MS, MT., Lab Director

Green Scientific Labs
 info@greenscientificlabs.com
 1-833 TEST CBD



Green Scientific Labs uses its best efforts to deliver high quality results and to verify that the data contained therein are based on sound scientific judgment and levels listed are guidelines only and all data was reported based on standard laboratory procedures and deviations. However Green Scientific Labs makes no warranties or claims to that effect and further shall not be liable for any damage or misrepresentation that may result from the use or misuse of the data contained herein in any way. Further, Green Scientific Labs makes no claims regarding representations of the analyzed sample to the larger batch from which it was taken. Data and information in this report are intended solely for the individual(s) for whom samples were submitted and as part of our strict confidentiality policy, Green Scientific Labs can only discuss results with the original client of record.

CERTIFICATE OF ANALYSIS

ISO/IEC 17025:2017 ACCREDITATION #103104



Order #: 58402
 Order Name: Canna Flora
 Hemp Strain: Super Sour
 Candy
 Batch#: CFH-720-IFSSC-0007
 Received: 07/22/2020
 Completed: 07/28/2020



Canna Flora Hemp
 220 Venus street. Unit #13
 Jupiter FL, 33458
 (561) 827-5500
 info@cannafloerahemp.com



TERPENES: TOTAL (0.617%)

Headspace GCMS - Shimadzu GCMS QP2020 with HS20

GSL SOP 404

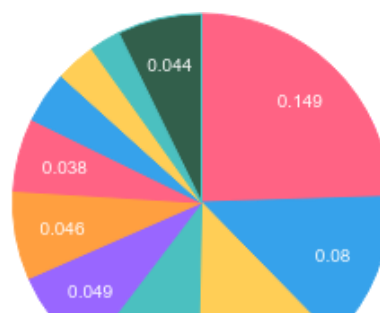
Prepared: 07/25/2020 17:48:51

Uploaded: 07/27/2020 12:44:53

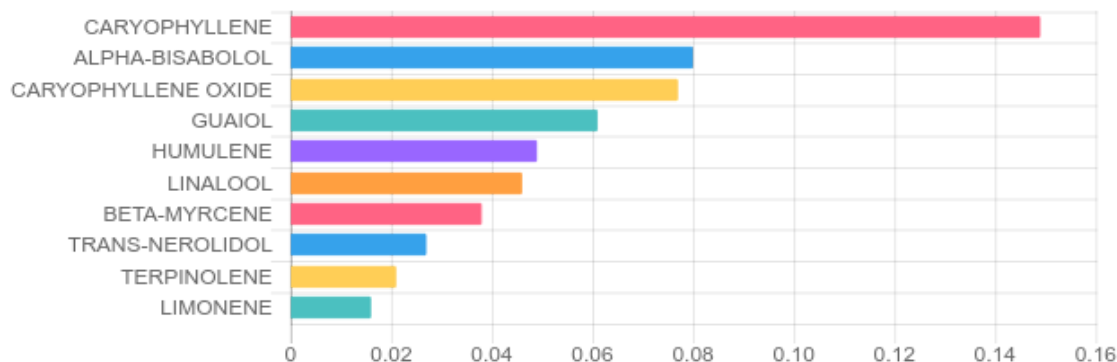
Terpene	Results (%)	LOQ (%)	LOD (%)
ALPHA-BISABOOL	0.080%	0.0067%	0.0063%
ALPHA-PINENE	0.015%	0.0067%	0.0063%
ALPHA-TERPINENE	0.009%	0.0067%	0.0063%
BETA-MYRCENE	0.038%	0.0067%	0.0063%
BETA-PINENE	0.013%	0.0067%	0.0063%
CARYOPHYLLENE	0.149%	0.0067%	0.0063%
CARYOPHYLLENE OXIDE	0.077%	0.0067%	0.0063%
EUCALYPTOL	B/LOQ	0.0067%	0.0063%
GAMMA-TERPINENE	0.007%	0.0067%	0.0016%
GUAJOL	0.061%	0.0067%	0.0063%
HUMULENE	0.049%	0.0067%	0.0063%
LIMONENE	0.016%	0.0067%	0.0063%
LINALOOL	0.046%	0.0067%	0.0063%
P-CYMENE	B/LOQ	0.0067%	0.0063%

Terpene	Results (%)	LOQ (%)	LOD (%)
TERPINOLENE	0.021%	0.0067%	0.0063%
TRANS-NEROLIDOL	0.027%	0.0067%	0.0063%

Terpenes Breakdown



Top Terpenes Results:



Tested for but not present:

CAMPHENE, 3-CARENE, TRANS-BETA-OCIMENE, CIS-BETA-OCIMENE, ISOPULEGOL, GERANIOL, CIS-NEROLIDOL

Dr. Andrew Hall, Ph.D., Chief Scientific Officer

Ben Witten, MS, MT., Lab Director

Green Scientific Labs
 info@greenscientificlabs.com
 1-833 TEST CBD



Green Scientific Labs uses its best efforts to deliver high quality results and to verify that the data contained therein are based on sound scientific judgment and levels listed are guidelines only and all data was reported based on standard laboratory procedures and deviations. However Green Scientific Labs makes no warranties or claims to that effect and further shall not be liable for any damage or misrepresentation that may result from the use or misuse of the data contained herein in any way. Further, Green Scientific Labs makes no claims regarding representations of the analyzed sample to the larger batch from which it was taken. Data and information in this report are intended solely for the individual(s) for whom samples were submitted and as part of our strict confidentiality policy, Green Scientific Labs can only discuss results with the original client of record.