

CERTIFICATE OF ANALYSIS

ISO/IEC 17025:2017 ACCREDITATION #103104



Order #: 58400
 Order Name: Canna Flora
 Hemp Strain: Super Lemon
 Haze
 Batch#: CFH-720-IFSLH-0005
 Received: 07/22/2020
 Completed: 07/28/2020



Canna Flora Hemp
 220 Venus street. Unit #13
 Jupiter FL, 33458
 (561) 827-5500
 info@cannafiorahemp.com



Sample



0.312%
D9-THC

14.661%
Total CBD

Cannabinoids Test

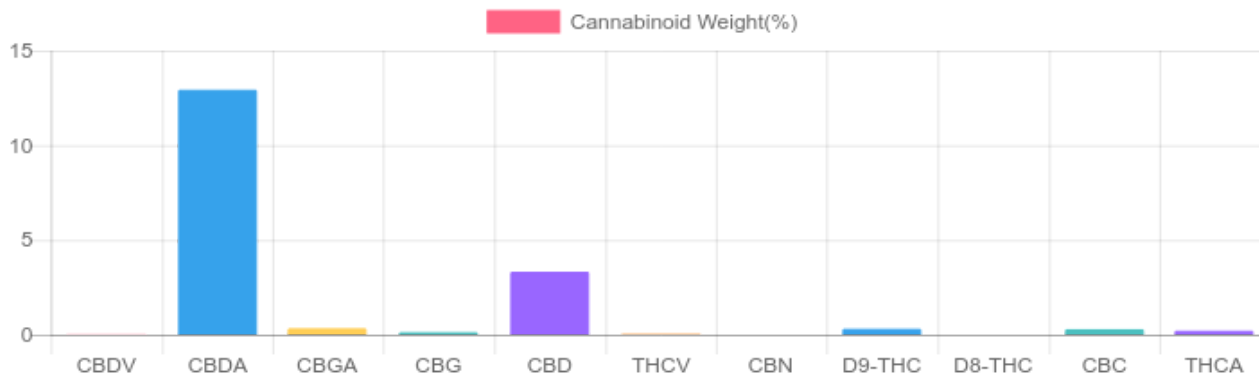
SHIMADZU INTEGRATED UPLC-PDA

GSL SOP 400

PREPARED: 07/25/2020 15:43:20

UPLOADED: 07/28/2020 11:24:12

Cannabinoids	LOQ	weight(%)	mg/g
D9-THC	10 PPM	0.312%	3.115
THCA	10 PPM	0.210%	2.103
CBD	10 PPM	3.321%	33.209
CBDA	20 PPM	12.931%	129.311
CBDV	20 PPM	0.022%	0.216
CBC	10 PPM	0.290%	2.898
CBN	10 PPM	N/D	N/D
CBG	10 PPM	0.131%	1.306
CBGA	20 PPM	0.341%	3.415
D8-THC	10 PPM	N/D	N/D
THCV	10 PPM	0.031%	0.305
TOTAL D9-THC		0.312%	0.312%
TOTAL CBD*		14.661%	146.615
TOTAL CANNABINOIDS		17.589%	175.878



Reporting Limit 10 ppm

*Total CBD = CBD + CBDA x 0.877

N/D - Not Detected, B/LOQ - Below Limit of Quantification

Dr. Andrew Hall, Ph.D., Chief Scientific Officer

Ben Witten, MS, MT., Lab Director

Green Scientific Labs
 info@greenscientificlabs.com
 1-833 TEST CBD



Green Scientific Labs uses its best efforts to deliver high quality results and to verify that the data contained therein are based on sound scientific judgment and levels listed are guidelines only and all data was reported based on standard laboratory procedures and deviations. However Green Scientific Labs makes no warranties or claims to that effect and further shall not be liable for any damage or misrepresentation that may result from the use or misuse of the data contained herein in any way. Further, Green Scientific Labs makes no claims regarding representations of the analyzed sample to the larger batch from which it was taken. Data and information in this report are intended solely for the individual(s) for whom samples were submitted and as part of our strict confidentiality policy, Green Scientific Labs can only discuss results with the original client of record.

CERTIFICATE OF ANALYSIS

ISO/IEC 17025:2017 ACCREDITATION #103104



Order #: 58400
 Order Name: Canna Flora
 Hemp Strain: Super Lemon
 Haze
 Batch#: CFH-720-IFSLH-0005
 Received: 07/22/2020
 Completed: 07/28/2020



Canna Flora Hemp
 220 Venus street. Unit #13
 Jupiter FL, 33458
 (561) 827-5500
 info@cannaflorahemp.com



TERPENES: TOTAL (0.408%)

Headspace GCMS - Shimadzu GCMS QP2020 with HS20

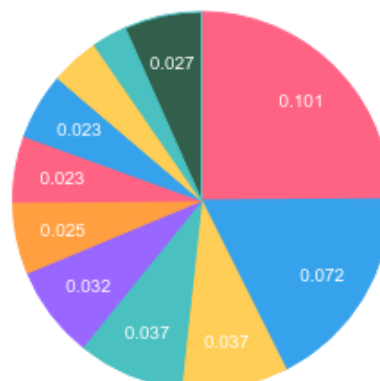
GSL SOP 404

Prepared: 07/25/2020 17:48:51

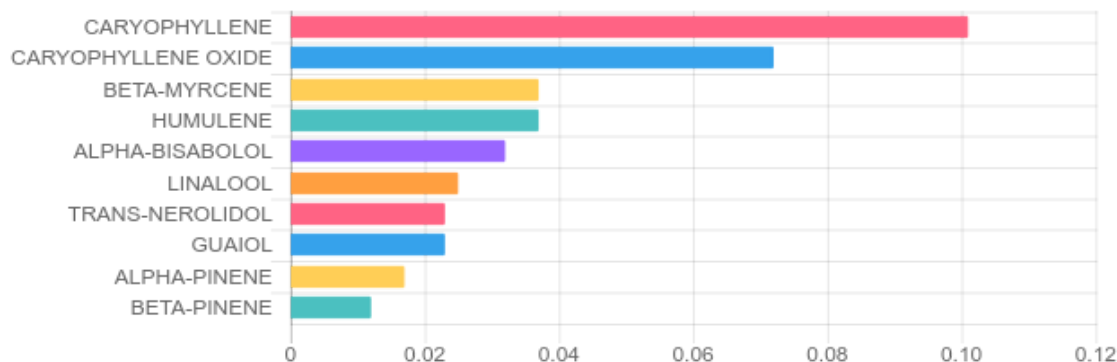
Uploaded: 07/27/2020 12:44:49

Terpene	Results (%)	LOQ (%)	LOD (%)
ALPHA-BISABOOL	0.032%	0.0067%	0.0063%
ALPHA-PINENE	0.017%	0.0067%	0.0063%
BETA-MYRCENE	0.037%	0.0067%	0.0063%
BETA-PINENE	0.012%	0.0067%	0.0063%
CARYOPHYLLENE	0.101%	0.0067%	0.0063%
CARYOPHYLLENE OXIDE	0.072%	0.0067%	0.0063%
CIS-BETA-OCIMENE	0.011%	0.0067%	0.0031%
GUAJOL	0.023%	0.0067%	0.0063%
HUMULENE	0.037%	0.0067%	0.0063%
LIMONENE	0.009%	0.0067%	0.0063%
LINALOOL	0.025%	0.0067%	0.0063%
P-CYMENE	B/LOQ	0.0067%	0.0063%
TERPINOLENE	0.007%	0.0067%	0.0063%
TRANS-NEROLIDOL	0.023%	0.0067%	0.0063%

Terpenes Breakdown



Top Terpenes Results:



Tested for but not present:

CAMPHENE, 3-CARENE, ALPHA-TERPINENE, TRANS-BETA-OCIMENE, EUCALYPTOL, GAMMA-TERPINENE, ISOPULEGOL, GERANIOL, CIS-NEROLIDOL

Dr. Andrew Hall, Ph.D., Chief Scientific Officer

Ben Witten, MS, MT., Lab Director

Green Scientific Labs
 info@greenscientificlabs.com
 1-833 TEST CBD



Green Scientific Labs uses its best efforts to deliver high quality results and to verify that the data contained therein are based on sound scientific judgment and levels listed are guidelines only and all data was reported based on standard laboratory procedures and deviations. However Green Scientific Labs makes no warranties or claims to that effect and further shall not be liable for any damage or misrepresentation that may result from the use or misuse of the data contained herein in any way. Further, Green Scientific Labs makes no claims regarding representations of the analyzed sample to the larger batch from which it was taken. Data and information in this report are intended solely for the individual(s) for whom samples were submitted and as part of our strict confidentiality policy, Green Scientific Labs can only discuss results with the original client of record.