

CERTIFICATE OF ANALYSIS

ISO/IEC 17025:2017 ACCREDITATION #103104



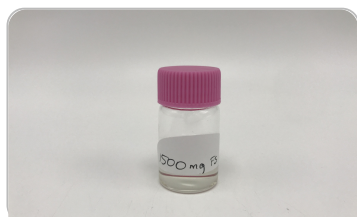
Order #: 41076
 Order Name: Soothe Extra
 Strength
 Batch#: 052
 Received: 11/11/2019
 Completed: 02/26/2020



Resonate Foods LLC
 796 State Route 293
 Eddyville KY, 42038
 team@resonatefoods.com



Sample



0.092%
D9-THC

5.388%
Total CBD

1,603.3 mg
Cannabinoids per
unit

1,527.4 mg
CBD per
unit

1 unit = 30 ml per unit x density (0.945) x
Cannabinoid concentration

Cannabinoids Test

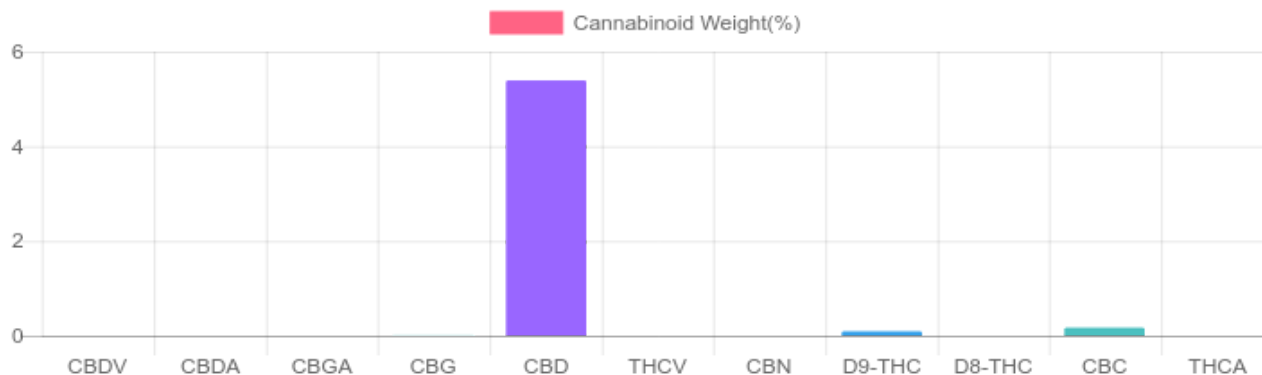
SHIMADZU INTEGRATED UPLC-PDA

GSL SOP 400

PREPARED: 11/12/2019 12:23:38

UPLOADED: 11/13/2019 08:40:40

Cannabinoids	LOQ	weight(%)	mg/g	mg/unit
D9-THC	10 PPM	0.092%	0.920	26.1
THCA	10 PPM	N/D	N/D	N/D
CBD	10 PPM	5.388%	53.877	1,527.4
CBDA	20 PPM	N/D	N/D	N/D
CBDV	20 PPM	N/D	N/D	N/D
CBC	10 PPM	0.169%	1.686	47.8
CBN	10 PPM	N/D	N/D	N/D
CBG	10 PPM	0.007%	0.071	2.0
CBGA	20 PPM	N/D	N/D	N/D
D8-THC	10 PPM	N/D	N/D	N/D
THCV	10 PPM	N/D	N/D	N/D
TOTAL D9-THC		0.092%	0.092%	26.1
TOTAL CBD*		5.388%	53.877	1,527.4
TOTAL CANNABINOIDS		5.656%	56.554	1,603.3



Reporting Limit 10 ppm

*Total CBD = CBD + CBDA x 0.877

N/D - Not Detected, B/LOQ - Below Limit of Quantification

Dr. Andrew Hall, Ph.D., Chief Scientific Officer

Ben Witten, MS, MT., Lab Director

Green Scientific Labs
 info@greenscientificlabs.com
 1-833 TEST CBD



Green Scientific Labs uses its best efforts to deliver high quality results and to verify that the data contained therein are based on sound scientific judgment and levels listed are guidelines only and all data was reported based on standard laboratory procedures and deviations. However Green Scientific Labs makes no warranties or claims to that effect and further shall not be liable for any damage or misrepresentation that may result from the use or misuse of the data contained herein in any way. Further, Green Scientific Labs makes no claims regarding representations of the analyzed sample to the larger batch from which it was taken. Data and information in this report are intended solely for the individual(s) for whom samples were submitted and as part of our strict confidentiality policy, Green Scientific Labs can only discuss results with the original client of record.

