

CERTIFICATE OF ANALYSIS

ISO/IEC 17025:2017 ACCREDITATION #103104



Order #: 37705
 Order Name: Sour Space
 Candy
 Batch#: Testing- 100219
 Received: 10/07/2019
 Completed: 10/11/2019



Bluhen Botanicals
 220 W Jackson Ave, Suite 106
 Knoxville TX, 37902
 (928) 300-4099
 info@bluhenbotanicals.com



Sample



0.086%
D9-THC

12.937%
Total CBD

Cannabinoids Test

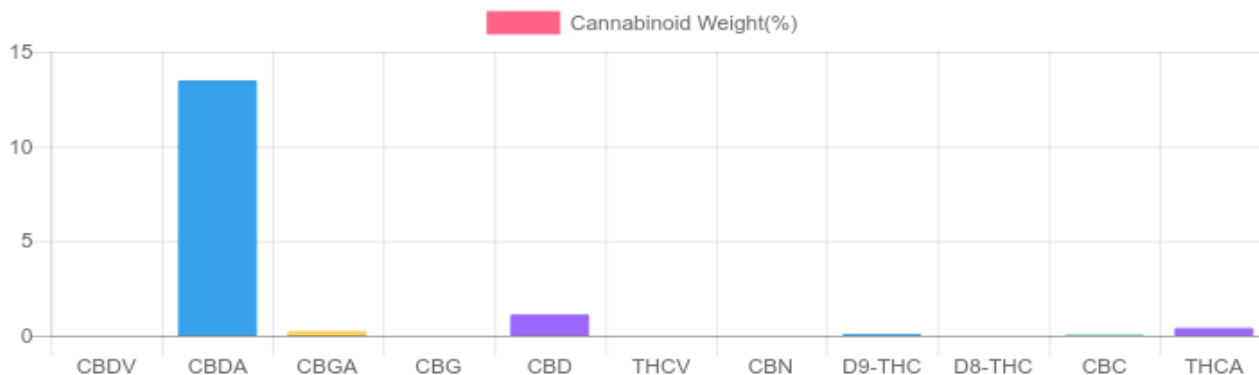
SHIMADZU INTEGRATED UPLC-PDA

GSL SOP 400

PREPARED: 10/08/2019 20:39:01

UPLOADED: 10/09/2019 12:50:42

Cannabinoids	LOQ	weight(%)	mg/g
D9-THC	10 PPM	0.086%	0.864
THCA	10 PPM	0.414%	4.138
CBD	10 PPM	1.116%	11.160
CBDA	20 PPM	13.479%	134.786
CBDV	20 PPM	N/D	N/D
CBC	10 PPM	0.052%	0.518
CBN	10 PPM	N/D	N/D
CBG	10 PPM	N/D	N/D
CBGA	20 PPM	0.246%	2.461
D8-THC	10 PPM	N/D	N/D
THCV	10 PPM	N/D	N/D
TOTAL D9-THC		0.086%	0.086%
TOTAL CBD*		12.937%	129.367
TOTAL CANNABINOIDS		15.393%	153.927



Reporting Limit 10 ppm

*Total CBD = CBD + CBDA x 0.877

N/D - Not Detected, B/LOQ - Below Limit of Quantification



4001 SW 47th Avenue Suite 208
 Davie, FL 33314
 1-833-TEST-CBD
 info@greenscientificlabs.com



Accreditation #103104



Dr. Andrew Hall, Ph.D., CSO & Lab Director

Green Scientific Labs uses its best efforts to deliver high quality results and to verify that the data contained therein are based on sound scientific judgment and levels listed are guidelines only and all data was reported based on standard laboratory procedures and deviations. However Green Scientific Labs makes no warranties or claims to that effect and further shall not be liable for any damage or misrepresentation that may result from the use or misuse of the data contained herein in any way. Further, Green Scientific Labs makes no claims regarding representations of the analyzed sample to the larger batch from which it was taken. Data and information in this report are intended solely for the individual(s) for whom samples were submitted and as part of our strict confidentiality policy, Green Scientific Labs can only discuss results with the original client of record.

CERTIFICATE OF ANALYSIS

ISO/IEC 17025:2017 ACCREDITATION #103104



Order #: 37705
 Order Name: Sour Space
 Candy
 Batch#: Testing- 100219
 Received: 10/07/2019
 Completed: 10/11/2019



Bluhen Botanicals
 220 W Jackson Ave, Suite 106
 Knoxville TX, 37902
 (928) 300-4099
 info@bluhenbotanicals.com



TERPENES: TOTAL (0.694%)

Headspace GCMS - Shimadzu GCMS QP2020 with HS20

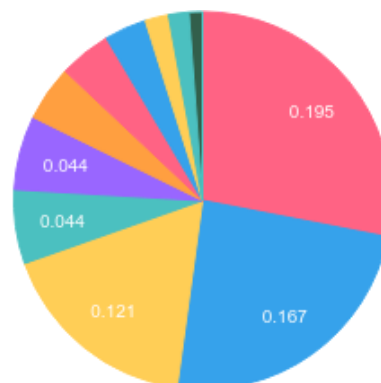
GSL SOP 404

Prepared: 10/08/2019 21:03:38

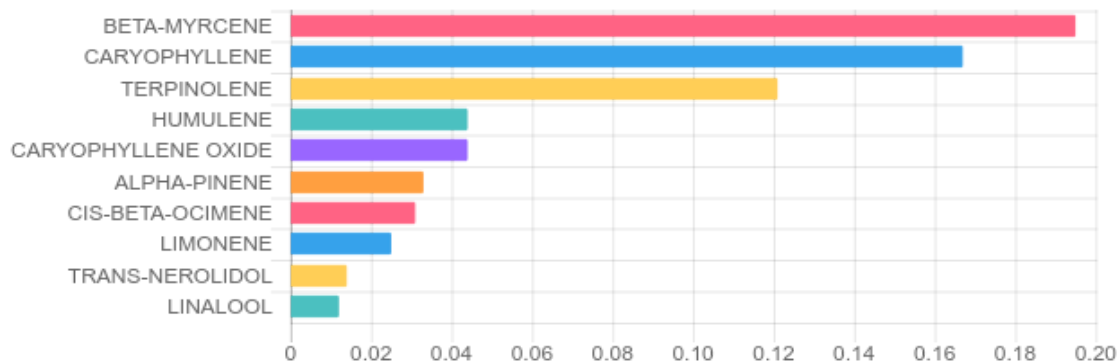
Uploaded: 10/11/2019 17:44:38

Terpene	Results (%)	LOQ (%)	LOD (%)
ALPHA-BISABOLOL	0.007%	0.0067%	0.0063%
ALPHA-PINENE	0.033%	0.0067%	0.0063%
ALPHA-TERPINENE	B/LOQ	0.0067%	0.0063%
BETA-MYRCENE	0.195%	0.0067%	0.0063%
CARYOPHYLLENE	0.167%	0.0067%	0.0063%
CARYOPHYLLENE OXIDE	0.044%	0.0067%	0.0063%
CIS-BETA-OCIMENE	0.031%	0.0067%	0.0031%
HUMULENE	0.044%	0.0067%	0.0063%
LIMONENE	0.025%	0.0067%	0.0063%
LINALOOL	0.012%	0.0067%	0.0063%
TERPINOLENE	0.121%	0.0067%	0.0063%
TRANS-NEROLIDOL	0.014%	0.0067%	0.0063%

Terpenes Breakdown



Top Terpenes Results:



Tested for but not present:

CAMPHENE, BETA-PINENE, 3-CARENE, TRANS-BETA-OCIMENE, P-CYMENE, EUCALYPTOL, ISOPULEGOL, GERANIOL, CIS-NEROLIDOL, GUAJOL



4001 SW 47th Avenue Suite 208
 Davie, FL 33314
 1-833-TEST-CBD
 info@greenscientificlabs.com



Dr. Andrew Hall

Dr. Andrew Hall, Ph.D., CSO & Lab Director

Green Scientific Labs uses its best efforts to deliver high quality results and to verify that the data contained therein are based on sound scientific judgment and levels listed are guidelines only and all data was reported based on standard laboratory procedures and deviations. However Green Scientific Labs makes no warranties or claims to that effect and further shall not be liable for any damage or misrepresentation that may result from the use or misuse of the data contained herein in any way. Further, Green Scientific Labs makes no claims regarding representations of the analyzed sample to the larger batch from which it was taken. Data and information in this report are intended solely for the individual(s) for whom samples were submitted and as part of our strict confidentiality policy, Green Scientific Labs can only discuss results with the original client of record.

CERTIFICATE OF ANALYSIS

ISO/IEC 17025:2017 ACCREDITATION #103104



Order #: 37705
 Order Name: Sour Space
 Candy
 Batch#: Testing- 100219
 Received: 10/07/2019
 Completed: 10/11/2019



Bluhen Botanicals
 220 W Jackson Ave, Suite 106
 Knoxville TX, 37902
 (928) 300-4099
 info@bluhenbotanicals.com



PESTICIDE ANALYSIS:

GSL SOP 401

PREPARED: 10/08/2019 21:14:23

UPLOADED: 10/10/2019 22:17:56

LCMS-MS - Shimadzu LCMS-8060

Pesticide	Action Level (ppm)	Results (ppm)	LOQ (ppm)	LOD (ppm)	Pesticide	Action Level (ppm)	Results (ppm)	LOQ (ppm)	LOD (ppm)
ABAMECTIN B1A	0.100	N/D	0.005	0.001	IMAZALIL	0.100	N/D	0.005	0.001
ACEPHATE	0.100	N/D	0.001	0.001	IMIDACLOPRID	5.000	N/D	0.005	0.001
ACEQUINOCYL	0.100	N/D	0.001	0.001	KRESOXIM-METHYL	0.100	N/D	0.010	0.005
ACETAMIPRID	0.100	N/D	0.005	0.001	MALATHION	0.500	N/D	0.005	0.001
ALDICARB	0.100	N/D	0.005	0.001	METALAXYL	2.000	N/D	0.001	0.001
AZOXYSTROBIN	0.100	N/D	0.001	0.001	METHIOCARB	0.100	N/D	0.005	0.001
BIFENAZATE	0.100	N/D	0.005	0.001	METHOMYL	1.000	N/D	0.001	0.001
BIFENTHRIN	3.000	N/D	0.005	0.001	MEVINPHOS	0.100	N/D	0.001	0.001
BOSCALID	0.100	N/D	0.005	0.001	MYCLOBUTANIL	0.100	N/D	0.005	0.001
CARBARYL	0.500	N/D	0.003	0.001	NALED	0.100	N/D	0.005	0.001
CARBOFURAN	0.100	N/D	0.001	0.001	OXAMYL	0.500	N/D	0.001	0.001
CHLORANTRANILIPROLE	10.000	N/D	0.005	0.005	PACLOBUTRAZOL	0.100	N/D	0.005	0.001
CHLORPYRIFOS	0.100	0.076	0.001	0.001	PERMETHRINS	0.500	N/D	0.005	0.001
CLOFENTEZINE	0.100	N/D	0.001	0.001	PHOSMET	0.100	N/D	0.005	0.001
DAMINOZIDE	0.100	N/D	0.005	0.001	PIPERONYL	3.000	N/D	0.001	0.001
DIAZANON	0.100	N/D	0.001	0.001	BUTOXIDE				
DICHLORVOS	0.100	N/D	0.005	0.001	PRALLETHRIN	0.100	N/D	0.005	0.005
DIMETHOATE	0.100	N/D	0.001	0.001	PROPICONAZOLE	0.100	N/D	0.010	0.005
DIMETHOMORPH	2.000	N/D	0.005	0.001	PROPOXUR	0.100	N/D	0.001	0.001
ETHOPROPHOS	0.100	N/D	0.001	0.001	PYRETHRINS				
ETOFENPROX	0.100	N/D	0.001	0.001	(PYRETHRIN I)	0.500	N/D	0.005	0.005
ETOXAZOLE	0.100	N/D	0.010	0.005	PYRIDABEN	0.100	N/D	0.005	0.001
FENHEXAMID	0.100	N/D	0.005	0.001	SPINETORAM	0.100	N/D	0.001	0.001
FENOXYCARB	0.100	N/D	0.005	0.001	SPINOSAD	0.100	N/D	0.001	0.001
FENPYROXIMATE	0.100	N/D	0.001	0.001	SPIROMESIFEN	0.100	N/D	0.005	0.001
FIPRONIL	0.100	N/D	0.003	0.001	SPIROTETRAMAT	0.100	N/D	0.001	0.001
FLONICAMID	0.100	N/D	0.025	0.010	SPIROXAMINE	0.100	N/D	0.001	0.001
FLUDIOXONIL	0.100	N/D	0.003	0.001	TEBUCONAZOLE	0.100	N/D	0.005	0.001
HEXYTHIAZOX	0.100	N/D	0.005	0.001	THIACLOPRID	0.100	N/D	0.001	0.001
					THIAMETHOXAM	5.000	N/D	0.001	0.001
					TRIFLOXYSTROBIN	0.100	N/D	0.001	0.001

N/D = Not Detected, A/LOQ = Above LOQ Level, B/LOQ = Below LOQ Level, B/LOD = Below LOD Level



4001 SW 47th Avenue Suite 208
 Davie, FL 33314
 1-833-TEST-CBD
 info@greenscientificlabs.com



Dr. Andrew Hall, Ph.D., CSO & Lab Director

Green Scientific Labs uses its best efforts to deliver high quality results and to verify that the data contained therein are based on sound scientific judgment and levels listed are guidelines only and all data was reported based on standard laboratory procedures and deviations. However Green Scientific Labs makes no warranties or claims to that effect and further shall not be liable for any damage or misrepresentation that may result from the use or misuse of the data contained herein in any way. Further, Green Scientific Labs makes no claims regarding representations of the analyzed sample to the larger batch from which it was taken. Data and information in this report are intended solely for the individual(s) for whom samples were submitted and as part of our strict confidentiality policy, Green Scientific Labs can only discuss results with the original client of record.

CERTIFICATE OF ANALYSIS

ISO/IEC 17025:2017 ACCREDITATION #103104



Order #: 37705
 Order Name: Sour Space
 Candy
 Batch#: Testing- 100219
 Received: 10/07/2019
 Completed: 10/11/2019



Bluhen Botanicals
 220 W Jackson Ave, Suite 106
 Knoxville TX, 37902
 (928) 300-4099
 info@bluhenbotanicals.com



Microbial Analysis:

Microbial Analysis GSL SOP 406

Uploaded: 10/11/2019 13:34:35

PCR - Agilent AriaMX

Test	Test Method Used	Device Used	LOD	Allowable Criteria	Actual Result	Pass/Fail
STEC E.COLI*	USP 61/62†	ARIAMX PCR	2 COPIES OF DNA	PRESENCE / ABSENT	BELOW LOD	PASS
SALMONELLA*	USP 61/62†	ARIAMX PCR	5 COPIES OF DNA	PRESENCE / ABSENT	BELOW LOD	PASS
YEAST AND MOLD	USP 61/62†	ARIAMX PCR	0.0857 CFU/G**	10,000	BELOW THRESHOLD	PASS

† USP 61 (enumeration of bacteria TAC, TYM, and ENT/Coliform), USP 62 (identifying specific species E.coli Aspergillus etc)

* STEC and Salmonella run as Multiplex

** CFU/g Calculation based on Select Category Type Gummy MIP/Extract Flower matrix



4001 SW 47th Avenue Suite 208
 Davie, FL 33314
 1-833-TEST-CBD
 info@greenscientificlabs.com



Accreditation #103104



Dr. Andrew Hall, Ph.D., CSO & Lab Director

Green Scientific Labs uses its best efforts to deliver high quality results and to verify that the data contained therein are based on sound scientific judgment and levels listed are guidelines only and all data was reported based on standard laboratory procedures and deviations. However Green Scientific Labs makes no warranties or claims to that effect and further shall not be liable for any damage or misrepresentation that may result from the use or misuse of the data contained herein in any way. Further, Green Scientific Labs makes no claims regarding representations of the analyzed sample to the larger batch from which it was taken. Data and information in this report are intended solely for the individual(s) for whom samples were submitted and as part of our strict confidentiality policy, Green Scientific Labs can only discuss results with the original client of record.

CERTIFICATE OF ANALYSIS

ISO/IEC 17025:2017 ACCREDITATION #103104



Order #: 37705
Order Name: Sour Space
Candy
Batch#: Testing- 100219
Received: 10/07/2019
Completed: 10/11/2019



Bluhen Botanicals
220 W Jackson Ave, Suite 106
Knoxville TX, 37902
(928) 300-4099
info@bluhenbotanicals.com



Mycotoxin Analysis:

LC-MS - Shimadzu LCMS-8060
GSL SOP 401

Uploaded: 10/10/2019 22:17:56

Analyte	Action Lvl (ppb)	Results (ppb)
AFLATOXIN B1	20	N/D
AFLATOXIN B2	20	N/D
AFLATOXIN G1	20	N/D
AFLATOXIN G2	20	N/D
OCHRATOXIN A	20	N/D

LOQ is 4ppb, LOD is 1ppb

Heavy Metals Analysis:

ICP-MS - Shimadzu ICPMS-2030
GSL SOP 403

Uploaded: 10/08/2019 20:33:26

Metal	Action Level (ppb)	Result (ppb)
ARSENIC (AS)	200	B/LOQ
CADMIUM (CD)	200	B/LOQ
MERCURY (HG)	100	B/LOQ
LEAD (PB)	500	B/LOQ

Lower Limit of Quantitation (LOQ) is 75 ppb



4001 SW 47th Avenue Suite 208
Davie, FL 33314
1-833-TEST-CBD
info@greenscientificlabs.com



Dr. Andrew Hall, Ph.D., CSO & Lab Director

Green Scientific Labs uses its best efforts to deliver high quality results and to verify that the data contained therein are based on sound scientific judgment and levels listed are guidelines only and all data was reported based on standard laboratory procedures and deviations. However Green Scientific Labs makes no warranties or claims to that effect and further shall not be liable for any damage or misrepresentation that may result from the use or misuse of the data contained herein in any way. Further, Green Scientific Labs makes no claims regarding representations of the analyzed sample to the larger batch from which it was taken. Data and information in this report are intended solely for the individual(s) for whom samples were submitted and as part of our strict confidentiality policy, Green Scientific Labs can only discuss results with the original client of record.