

CERTIFICATE OF ANALYSIS



Order #: 32314
Order Name: LuZa CBD
1000mg +
Batch#: 052019
Received: 06/13/2019
Completed: 06/18/2019

LuZa CBD
14 N Main St
Fond du Lac WI, 54935
(920) 948-6515
luzaf2b@gmail.com



Sample



0.123%
D9-THC

4.823%
Total CBD

1,871.8 mg
Cannabinoids per
tincture

1,447.1 mg
CBD per
tincture

1 tincture = 30 ml per tincture x density (1) x
Cannabinoid concentration

Cannabinoids Test

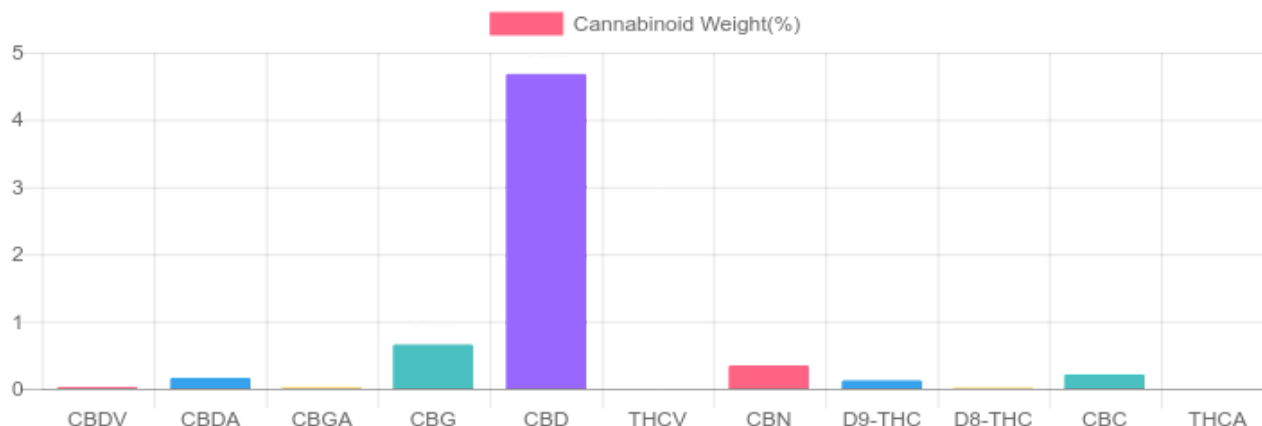
SHIMADZU INTEGRATED UPLC-PDA

GSL SOP 400

PREPARED: 06/13/2019 23:37:44

UPLOADED: 06/18/2019 15:12:52

Cannabinoids	LOQ	weight(%)	mg/g	mg/tincture
D9-THC	10 PPM	0.123%	1.230	36.9
THCA	10 PPM	N/D	N/D	N/D
CBD	10 PPM	4.682%	46.823	1,404.7
CBDA	20 PPM	0.161%	1.613	48.4
CBDV	20 PPM	0.023%	0.226	6.8
CBC	10 PPM	0.214%	2.139	64.2
CBN	10 PPM	0.345%	3.448	103.4
CBG	10 PPM	0.657%	6.567	197.0
CBGA	20 PPM	0.020%	0.200	6.0
D8-THC	10 PPM	0.015%	0.148	4.4
THCV	10 PPM	N/D	N/D	N/D
TOTAL D9-THC		0.123%	1.230	36.9
TOTAL CBD*		4.823%	48.238	1,447.1
TOTAL CANNABINOIDS		6.240%	62.394	1,871.8



Reporting Limit 10 ppm

*Total CBD = CBD + CBDA x 0.877

N/D - Not Detected, B/LOQ - Below Limit of Quantification



4001 SW 47th Avenue Suite 207
Davie, FL 33314
1-833-TEST-CBD
info@greenscientificlabs.com



Dr. Andrew Hall, Ph.D., CSO & Lab Director

Green Scientific Labs uses its best efforts to deliver high quality results and to verify that the data contained therein are based on sound scientific judgment and levels listed are guidelines only and all data was reported based on standard laboratory procedures and deviations. However Green Scientific Labs makes no warranties or claims to that effect and further shall not be liable for any damage or misrepresentation that may result from the use or misuse of the data contained herein in any way. Further, Green Scientific Labs makes no claims regarding representations of the analyzed sample to the larger batch from which it was taken. Data and information in this report are intended solely for the individual(s) for whom samples were submitted and as part of our strict confidentiality policy, Green Scientific Labs can only discuss results with the original client of record.

CERTIFICATE OF ANALYSIS



Order #: 32314
Order Name: LuZa CBD
1000mg +
Batch#: 052019
Received: 06/13/2019
Completed: 06/18/2019

LuZa CBD
14 N Main St
Fond du Lac WI, 54935
(920) 948-6515
luzaf2b@gmail.com



TERPENES: TOTAL (0.214%)

Headspace GCMS - Shimadzu GCMS QP2020 with HS20

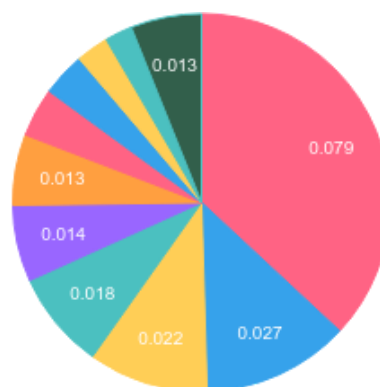
GSL SOP 404

Prepared: 06/14/2019 19:48:40

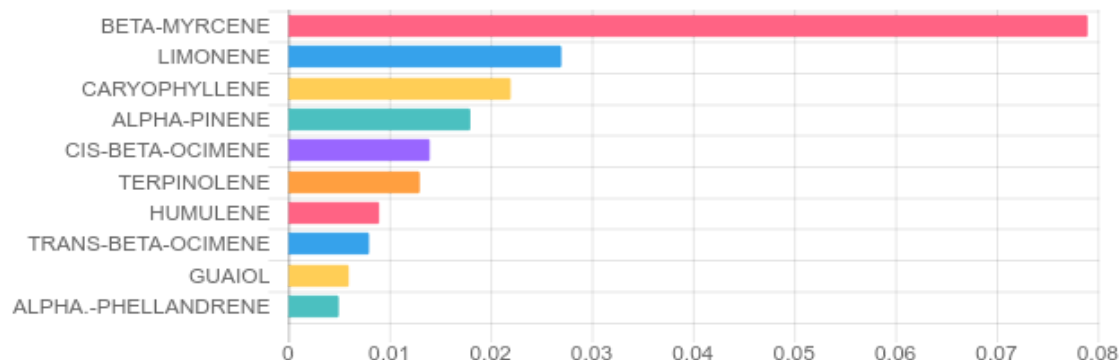
Uploaded: 06/17/2019 19:49:00

Terpene	Results (%)	LOQ (%)	LOD (%)
3-CARENE	B/LOQ	0.0067%	0.0063%
ALPHA-PINENE	0.018%	0.0067%	0.0063%
ALPHA-PHELLANDRENE	B/LOQ	0.0067%	0.0063%
BETA-MYRCENE	0.079%	0.0067%	0.0063%
CAMPHENE	B/LOQ	0.0067%	0.0063%
CARYOPHYLLENE	0.022%	0.0067%	0.0063%
CIS-BETA-OCIMENE	0.014%	0.0067%	0.0031%
FENCHOL	B/LOQ	0.0067%	0.0063%
GUAJOL	B/LOQ	0.0067%	0.0063%
HUMULENE	0.009%	0.0067%	0.0063%
LIMONENE	0.027%	0.0067%	0.0063%
TERPINEOL (MIX OF ISOMERS)	B/LOQ	0.0067%	0.0063%
TERPINOLENE	0.013%	0.0067%	0.0063%
TRANS-BETA-OCIMENE	0.008%	0.0067%	0.0031%

Terpenes Breakdown



Top Terpenes Results:



Tested for but not present:

SABINENE, BETA-PINENE, ALPHA-TERPINENE, EUCALYPTOL, GAMMA-TERPINENE, SABINENE HYDRATE, LINALOOL, FENCHONE, ISOPULEGOL, CAMPHOR, ISOBORNEOL, MENTHOL, BORNEOL, GAMMA-TERPINEOL, NEROL, GERANIOL, PULEGONE, GERANYL ACETATE, ALPHA-CEDRENE, VALENCENE, CIS-NEROLIDOL, TRANS-NEROLIDOL, CARYOPHYLLENE OXIDE, CEDROL, ALPHA-BISABOOL



4001 SW 47th Avenue Suite 207
Davie, FL 33314
1-833-TEST-CBD
info@greenscientificlabs.com



Dr. Andrew Hall, Ph.D., CSO & Lab Director

Green Scientific Labs uses its best efforts to deliver high quality results and to verify that the data contained therein are based on sound scientific judgment and levels listed are guidelines only and all data was reported based on standard laboratory procedures and deviations. However Green Scientific Labs makes no warranties or claims to that effect and further shall not be liable for any damage or misrepresentation that may result from the use or misuse of the data contained herein in any way. Further, Green Scientific Labs makes no claims regarding representations of the analyzed sample to the larger batch from which it was taken. Data and information in this report are intended solely for the individual(s) for whom samples were submitted and as part of our strict confidentiality policy, Green Scientific Labs can only discuss results with the original client of record.